

APPENDIX A

INTERPRETED SEISMIC REFLECTION PROFILES, CARSON SINK, NEVADA

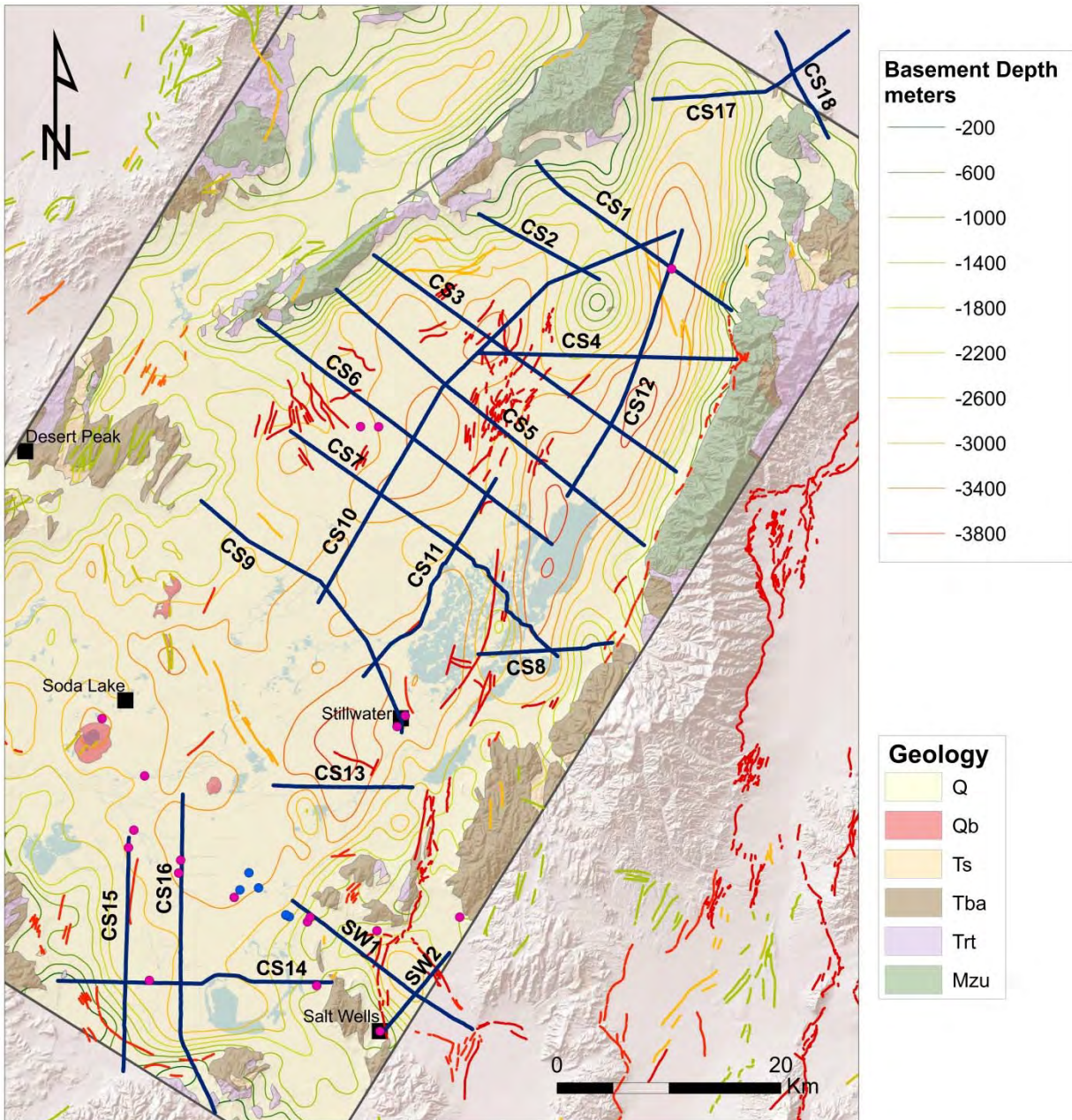
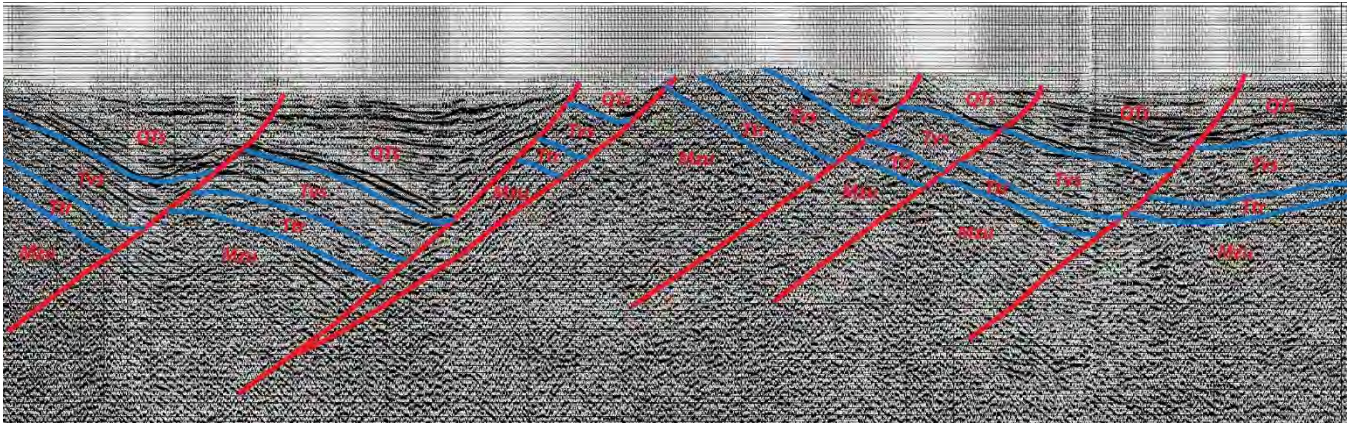


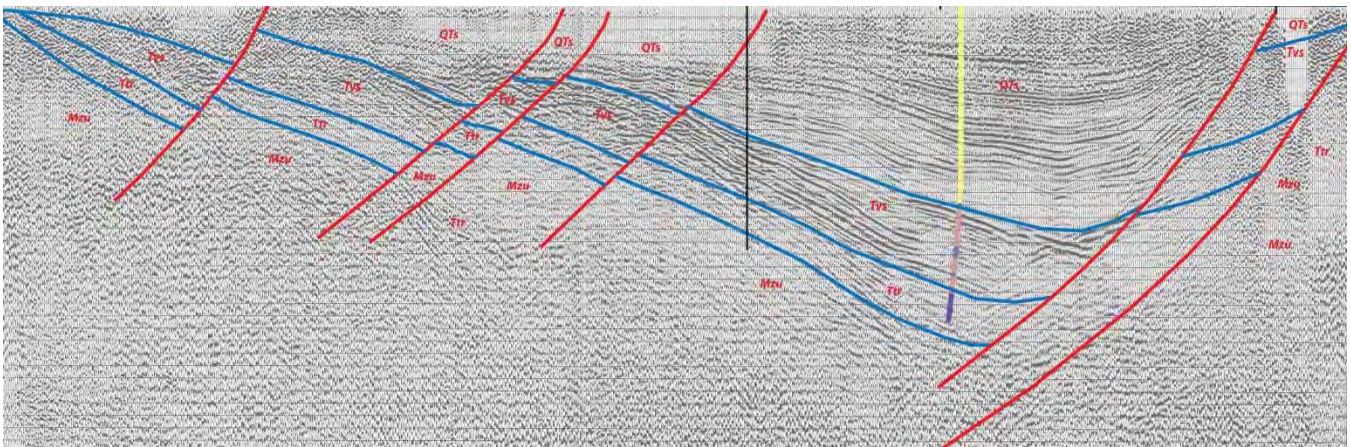
Figure A1. Generalized geologic map of the Carson Sink, showing locations of interpreted seismic reflection profiles, Quaternary faults (red, yellow, and green lines), and depth of Mesozoic basement. Existing geothermal power plants are shown by black and purple squares. Blue and purple dots are wells with available data from logs, cuttings, or core.

Profile CS17



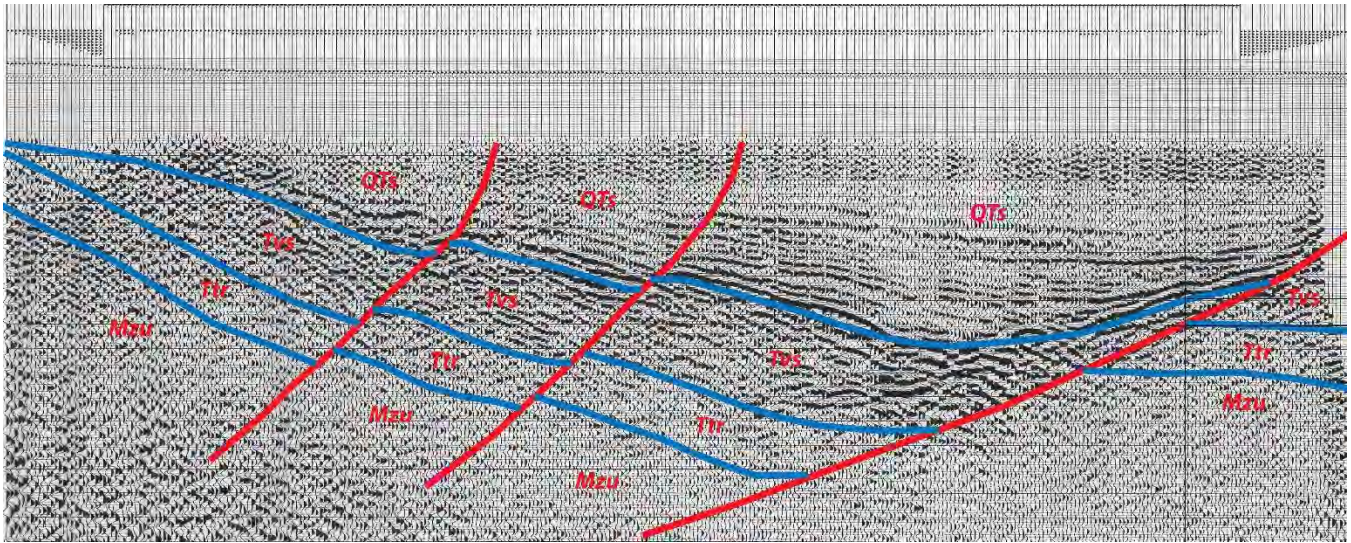
Seismic data owned or controlled by Seismic Exchange, Inc.; interpretation is that of the University of Nevada, Reno.

Profile CS1



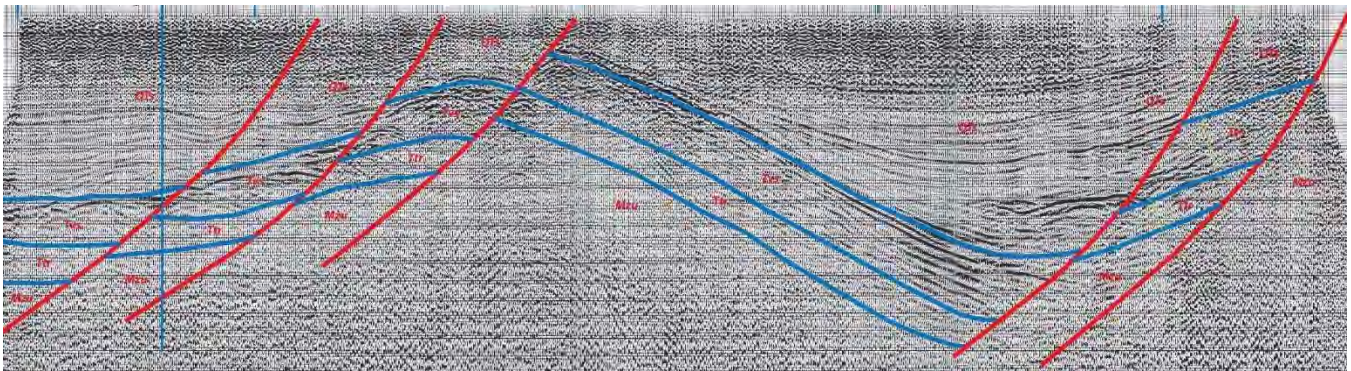
Seismic data owned or controlled by Seismic Exchange, Inc.; interpretation is that of the University of Nevada, Reno.

Profile CS2



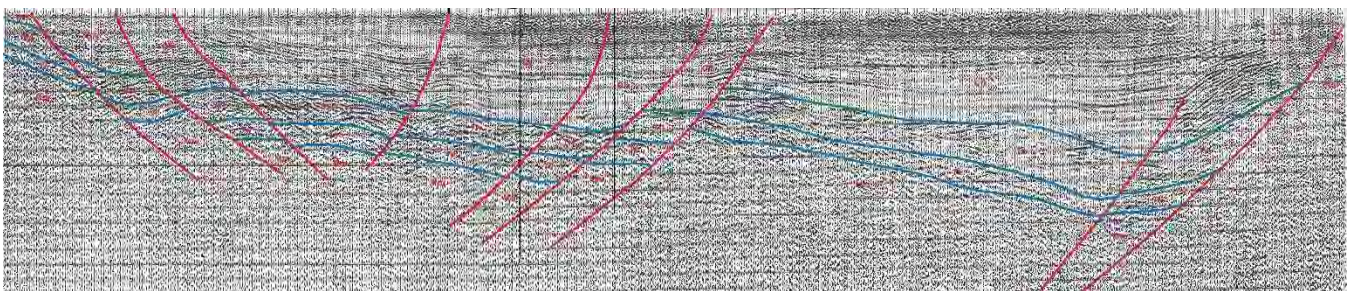
Seismic data owned or controlled by Seismic Exchange, Inc.; interpretation is that of the University of Nevada, Reno.

Profile CS4



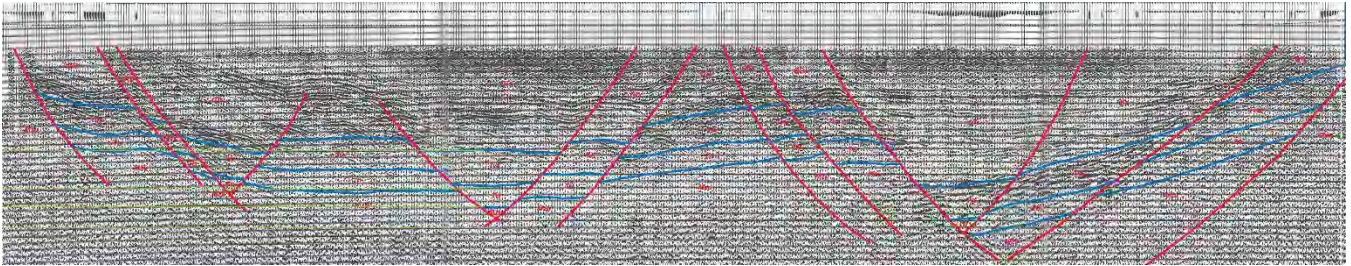
Seismic data owned or controlled by Seismic Exchange, Inc.; interpretation is that of the University of Nevada, Reno.

Profile CS3



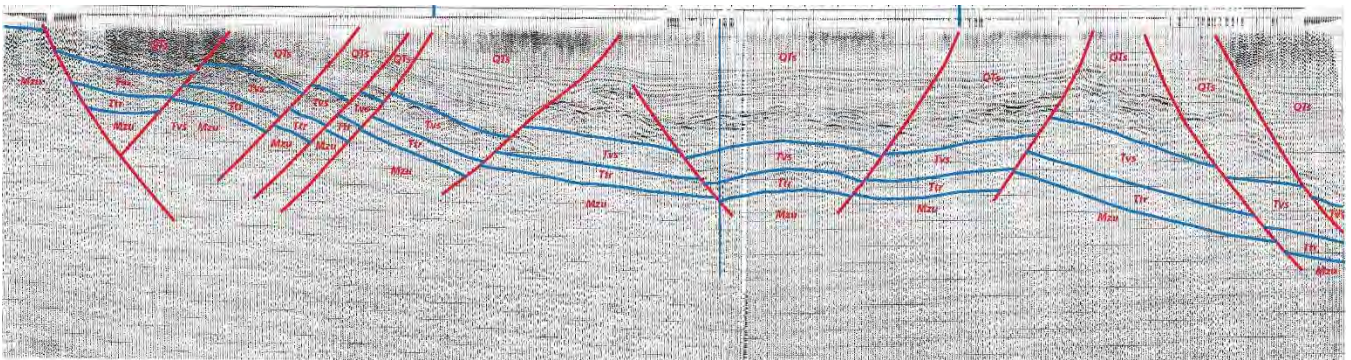
Seismic data owned or controlled by Seismic Exchange, Inc.; interpretation is that of the University of Nevada, Reno.

Profile CS5



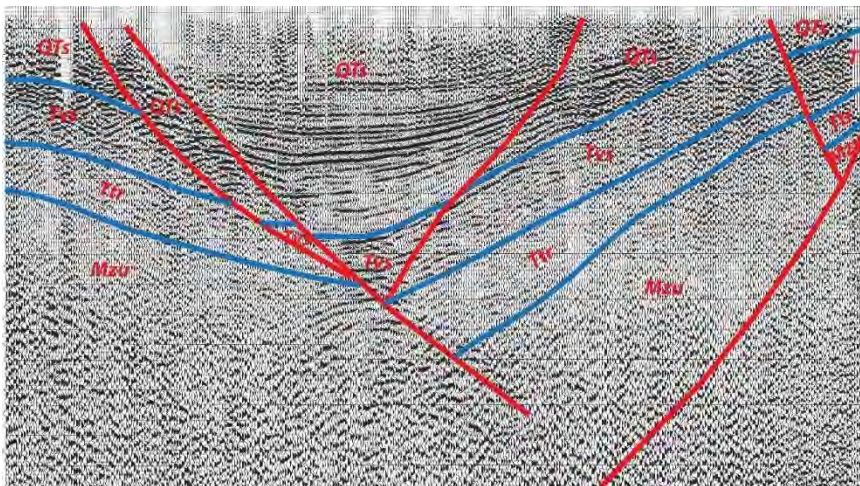
Seismic data owned or controlled by Seismic Exchange, Inc.; interpretation is that of the University of Nevada, Reno.

Profile CS6



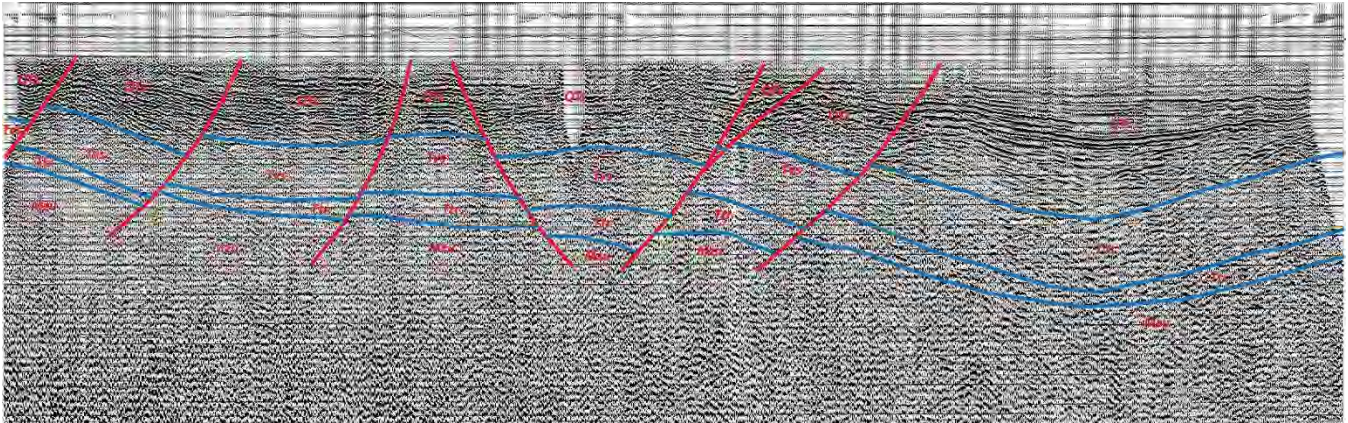
Seismic data owned or controlled by Seismic Exchange, Inc.; interpretation is that of the University of Nevada, Reno.

Profile CS8



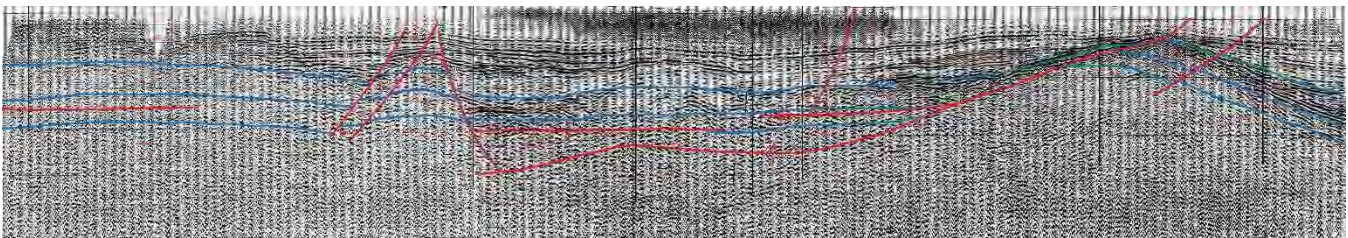
Seismic data owned or controlled by Seismic Exchange, Inc.; interpretation is that of the University of Nevada, Reno.

Profile CS9



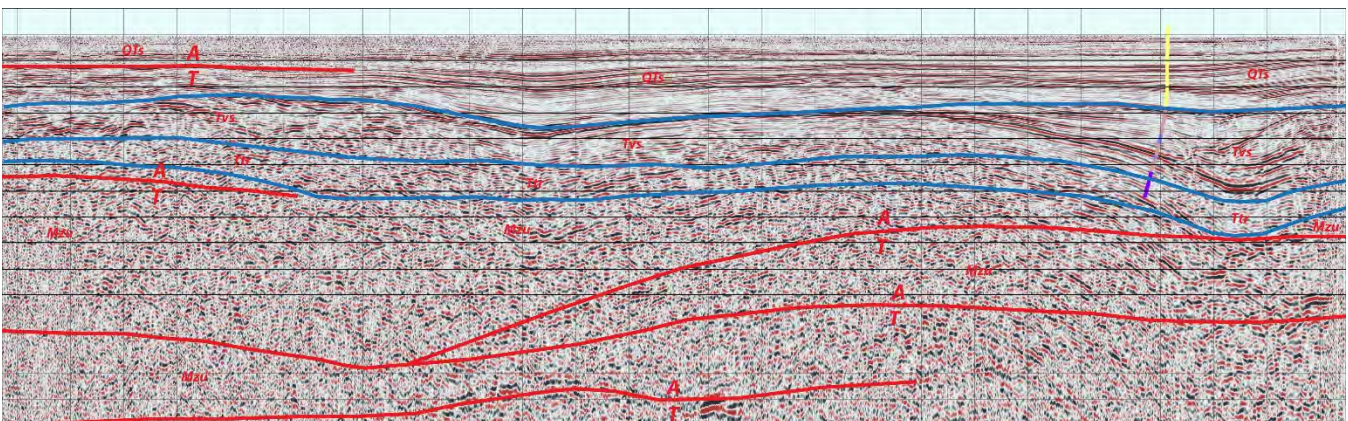
Seismic data owned or controlled by Seismic Exchange, Inc.; interpretation is that of the University of Nevada, Reno.

Profile CS10



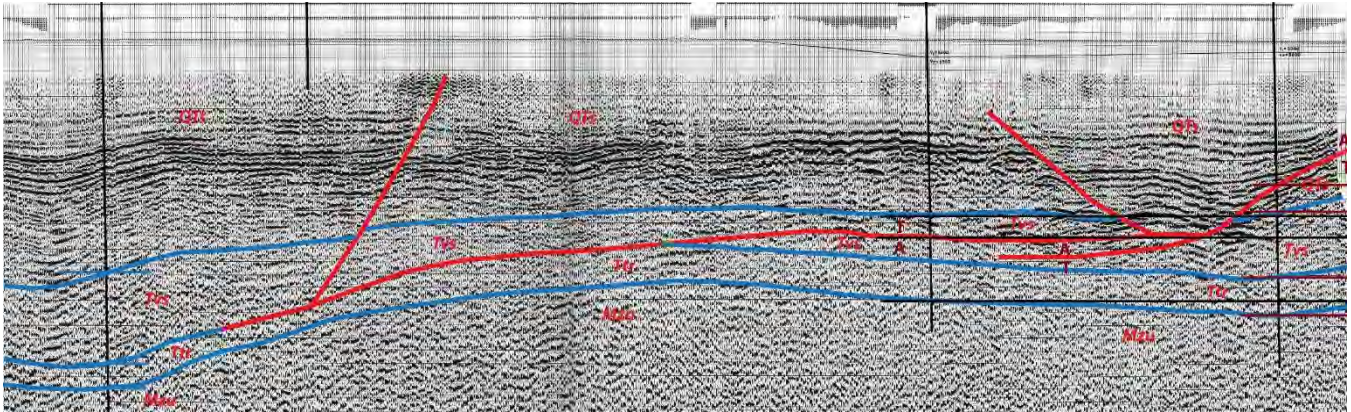
Seismic data owned or controlled by Seismic Exchange, Inc.; interpretation is that of the University of Nevada, Reno.

Profile CS12



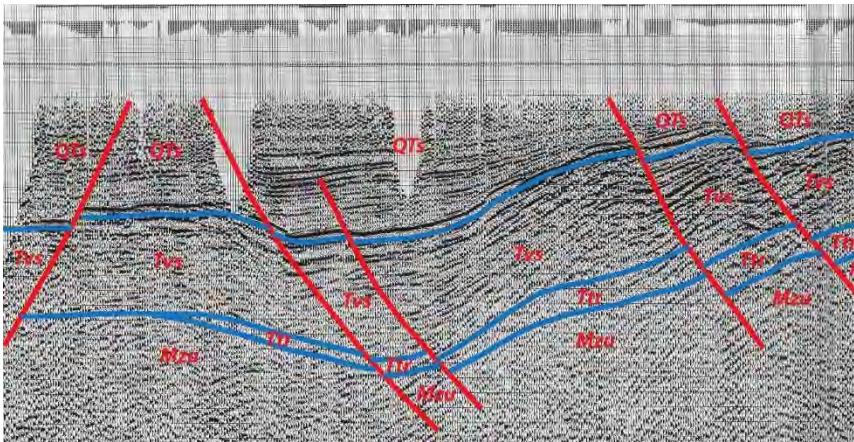
Seismic data owned or controlled by Seismic Exchange, Inc.; interpretation is that of the University of Nevada, Reno.

Profile CS11



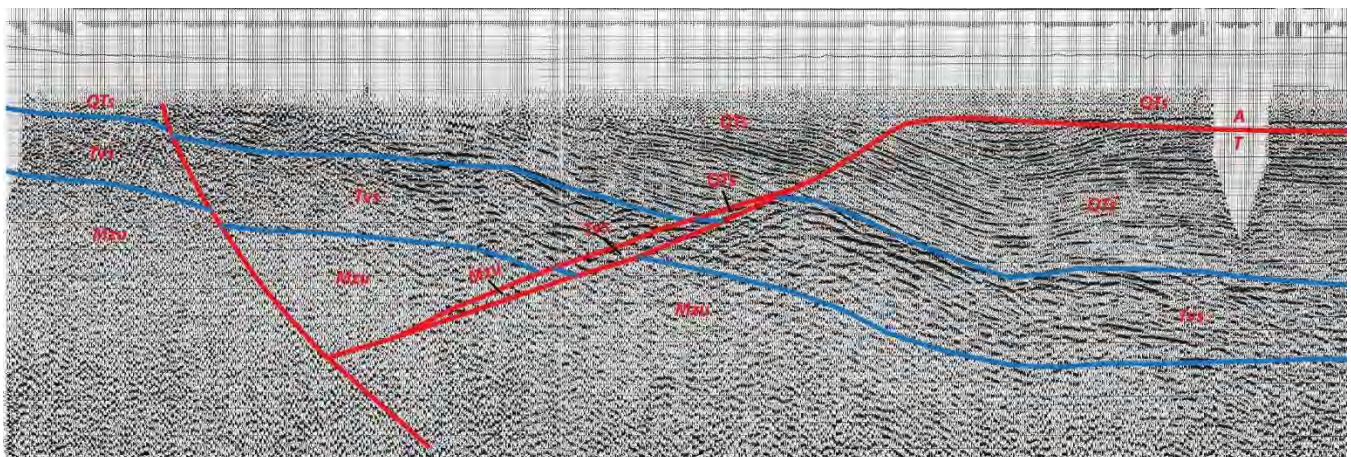
Seismic data owned or controlled by Seismic Exchange, Inc.; interpretation is that of the University of Nevada, Reno.

Profile CS13



Seismic data owned or controlled by Seismic Exchange, Inc.; interpretation is that of the University of Nevada, Reno.

Profile CS15



Seismic data owned or controlled by Seismic Exchange, Inc.; interpretation is that of the University of Nevada, Reno.

